

Product Specification

Type

Face-up desktop colour book scanner

Scanning Method

Scan system with rotating lens

Document Type

Books, Sheets and 3-D objects

Scanning Area

A2 – Plus (oversize)

Max Area: 456 mm x 609 mm (18" x 24")

Scanning Height

Max Height: 100 mm

Scanning Resolution

200 / 240 / 300 / 360 / 400 / 600 dpi

Image Sensor

10.5 megapixels CCD Image sensor

Light Source

2 x Fluorescent Lamp 28W

Scanning Bit Depth

24bit colour, 8bit grayscale,
1bit monochrome

Scanning Speed

Approx: 8 seconds
(A2, colour, 300dpi)

Scanning Features

Curvature Correction
Centre Erase
Masking
Finger Shadow Masking
Centring
Book Split
Text and Photo Mode

Interface

USB 2.0

Driver

TWAIN 32bit

OS Compatibility

32 bit operating systems
Windows 2000 (SP4)
Windows XP (SP3)
Windows Vista

Minimum Computer Specification

INTEL Core2 Duo 2.4 GHz
RAM 2 GB
Graphics Card 256 MB

Dimensions

730 mm (w)
873 mm (d)
1075 mm (h)

Weight

53 kg

Power Supply

220-240v, 50/60 Hz

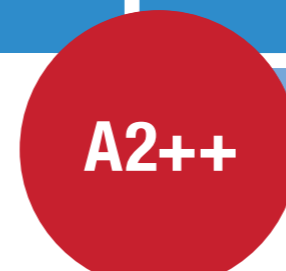
Power Consumption

Less than 100 Watt

Options

Glass Plate

- Product specifications contained in this brochure are subject to change without notice.
- Please read the operators manual before using the machine.
- Microsoft® and Windows® are registered trademarks of Microsoft Corporation of the USA.
- All other brand and product names may be registered trademarks or trademarks of their respective holders and are hereby acknowledged.



A2++



PS7000C MKII

Colour Book Scanner

COVERGOLD

Covergold Limited
39 Tenter Road
Moulton Park
Northampton
United Kingdom
NN3 6AX

Tel: +44(0)1604 490300
Fax: +44(0)1604 490330
www.covergold.co.uk



PS7000C MKII: Simple and clever

→ Simple

Place the book on the book cradle, simply select left, right or both pages, and scan. It's as easy as that! Top quality results are achieved, not only from bound and unbound material, but also from magazines, newspapers, manuals and much more...

→ Clever

The PS7000C MKII automatically corrects the curvature of bound material. Even 3D objects can be scanned. Further standard features include centre erase, masking, finger shadow masking, centring, book split, text and photo mode.

→ Not just A2 ++

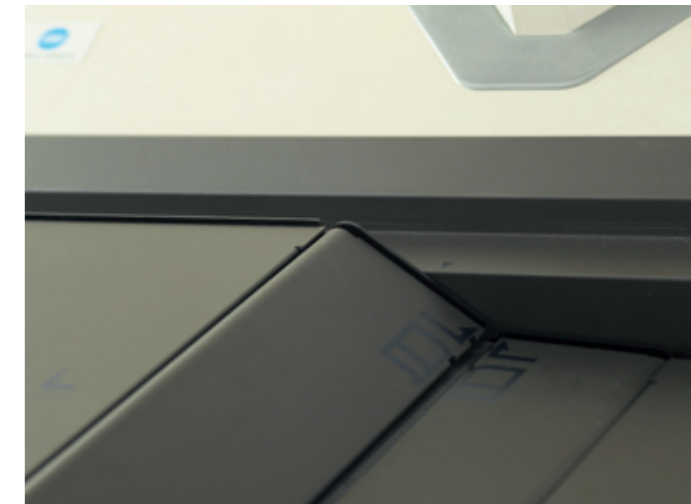
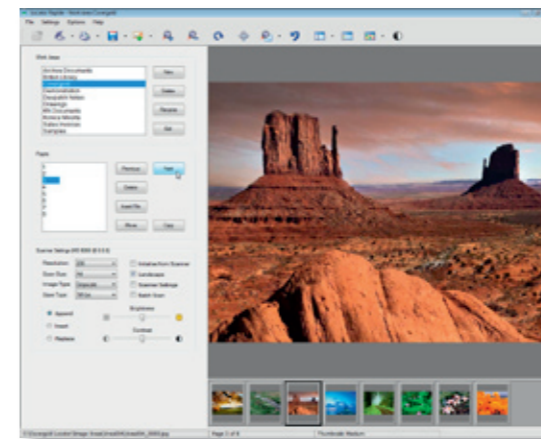
By the preview function any desired format can be determined and processed within the possibilities of the PS7000C MKII.

→ High resolution scanning

The 10.5 megapixel CCD sensor, guarantees a perfect quality scan. The PS7000C MKII scans black and white originals in grayscale, just as easily as colour originals in full colour.

→ Extensive functionality

The TWAIN driver makes the PS7000C MKII easy to operate and highly functional, when used in conjunction with a variety of Imaging applications. The preview function within the driver, allows you to Pre Scan and view the results, based upon the selected settings of the PS7000C MKII. A USB-2 interface and a calibration kit are supplied as standard.



Book carriage

→ Book cradle and glass plate

The book cradle is supplied as standard, allowing the operator to easily adjust levels of bound books, without damaging the spine. An optional Glass Plate serves to smooth out any creases or folds, that may exist within the originals, giving a perfect scan result every time. The Glass Plate can be used as and when required.

→ Ease of operation

The PS7000C MKII includes our very own LOCATOR RAPIDE scanning software, which has been developed from years of experience within the Document Imaging sector. With LOCATOR RAPIDE, not only can you set the scanner functions (without opening the driver), you can save Images to a variety of formats including bmp, jpg, PDF, TIFF and also create batches or multipage files. Special features include post processing of colour Images, despeckling all or part of an Image, split screen or thumbnail view and much more. The PS7000C MKII can also be deployed as a public scanner by using the touch screen software.



Display

Foot switch